

17 point match (game 1)

○ Leo Fernandez (0 points)

● Me (1 points)

Match Information

Leo Fernandez's rating: n/a

Me's rating: n/a

Date: January 24, 2007

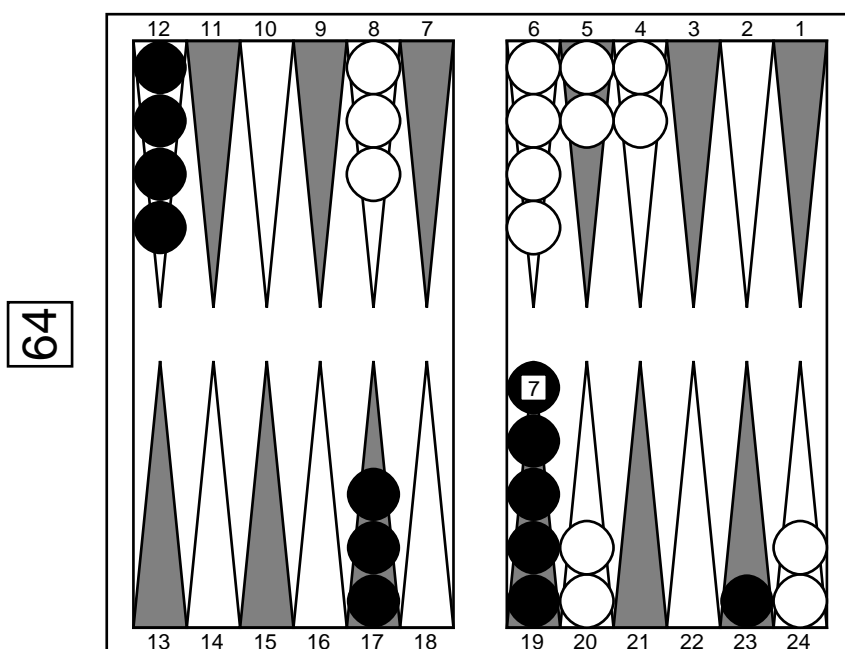
Event: n/a

Round: n/a

Place: n/a

Annotator: n/a

Comments: n/a



Position ID: 2J4DwDDCn4MHAA Match ID: MAE6AgAACAAA

Pip counts: Leo Fernandez 154, Me 120

Cube analysis

4-ply cubeless MWC 46.56% (Money: +0.093)

0.508 0.171 0.003 - 0.492 0.094 0.003

Cubeful equities:

1. No double 46.86%

2. Double, pass 50.00% (3.14%)

3. Double, take 45.81% (-1.05%)

Proper cube action: No double, take (25.0%)

○ Double??

● Take

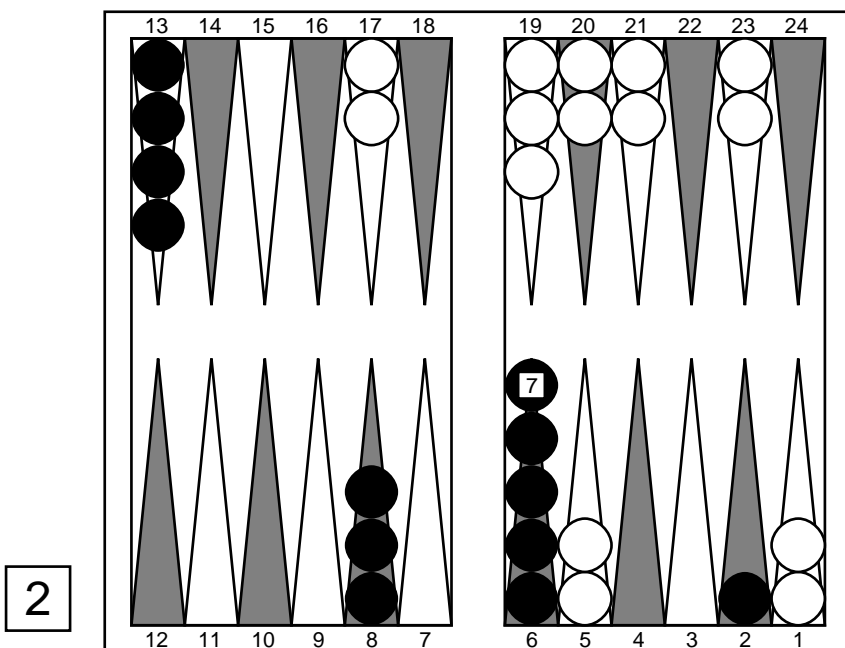
○ 46: 8/2 6/2

* 1. Cubeful 2-ply 8/2 6/2
0.491 0.166 0.003 - 0.509 0.089 0.002

MWC: 45.38%

Move number 4:

Me to play 25



Position ID: ZjsDwDDCn4MHAA Match ID: UQk1AgAACAAA
 Pip counts: Leo Fernandez 144, Me 120

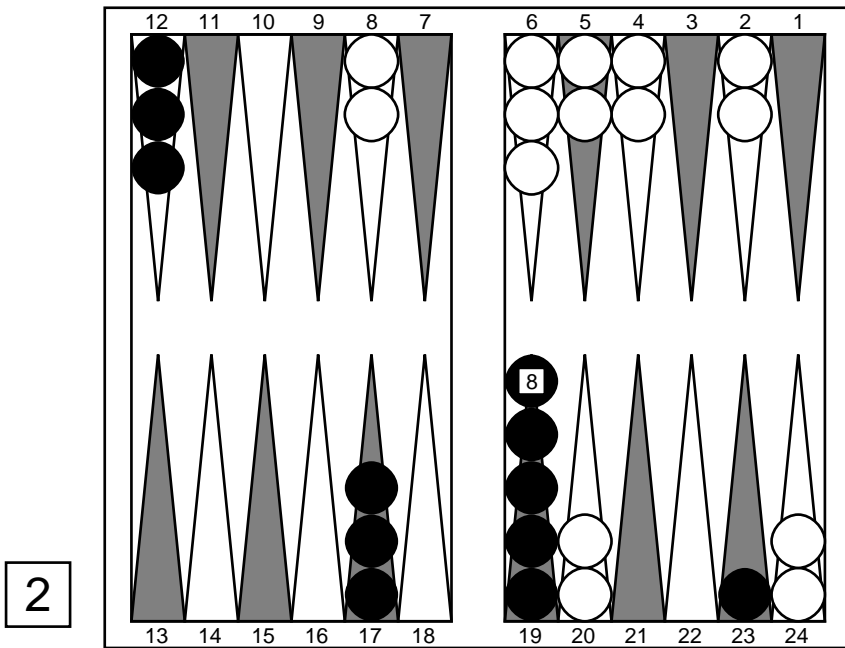
Cube analysis
 2-ply cubeless MWC 53.32% (Money: -0.061)
 0.509 0.089 0.002 - 0.491 0.166 0.003
 Cubeful equities:
 1. No double 54.49%
 2. Double, pass 61.51% (7.02%)
 3. Double, take 50.01% (-4.47%)
 Proper cube action: No redouble, take (38.9%)

● 25: 13/6

* 1. Cubeful 0-ply 13/6 MWC: 53.82%
 0.464 0.077 0.003 - 0.536 0.158 0.002

Move number 5:

Leo Fernandez to play 23

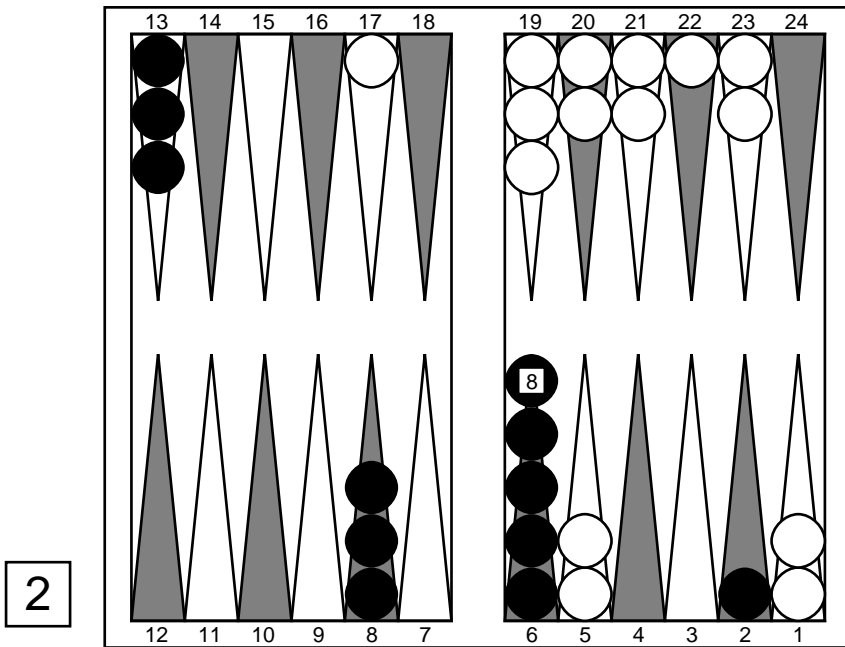


Position ID: ZjsDwDDCPwCHAA Match ID: EQEtAgAACAAA
 Pip counts: Leo Fernandez 144, Me 113
 ○ 23: 8/3

* 1. Cubeful 2-ply 8/3 MWC: 46.17%
 0.524 0.186 0.004 - 0.476 0.085 0.002

Move number 6:

Me to play 33



Position ID: 1nYCwDDCPwCHAA Match ID: UYktAgAACAAA
 Pip counts: Leo Fernandez 139, Me 113

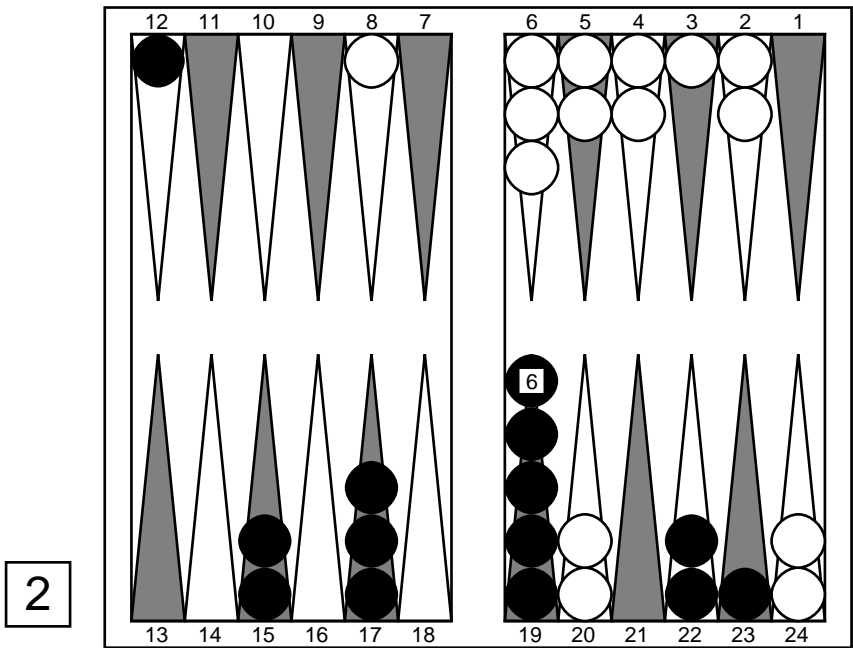
Cube analysis
 2-ply cubeless MWC 52.61% (Money: -0.152)

0.476 0.085 0.002 - 0.524 0.186 0.004
 Cubeful equities:
 1. No double 53.71%
 2. Double, pass 61.51% (7.79%)
 3. Double, take 48.42% (-5.30%)
 Proper cube action: No redouble, take (40.5%)

● 33: 13/10(2) 6/3(2)?

- 1. Cubeful 2-ply 6/3(4) MWC: 55.34%
 0.526 0.114 0.007 - 0.474 0.137 0.004
- * 2. Cubeful 2-ply 13/10(2) 6/3(2) MWC: 54.54% (-0.80%)
 0.497 0.118 0.006 - 0.503 0.175 0.005

Move number 7: Leo Fernandez to play 46



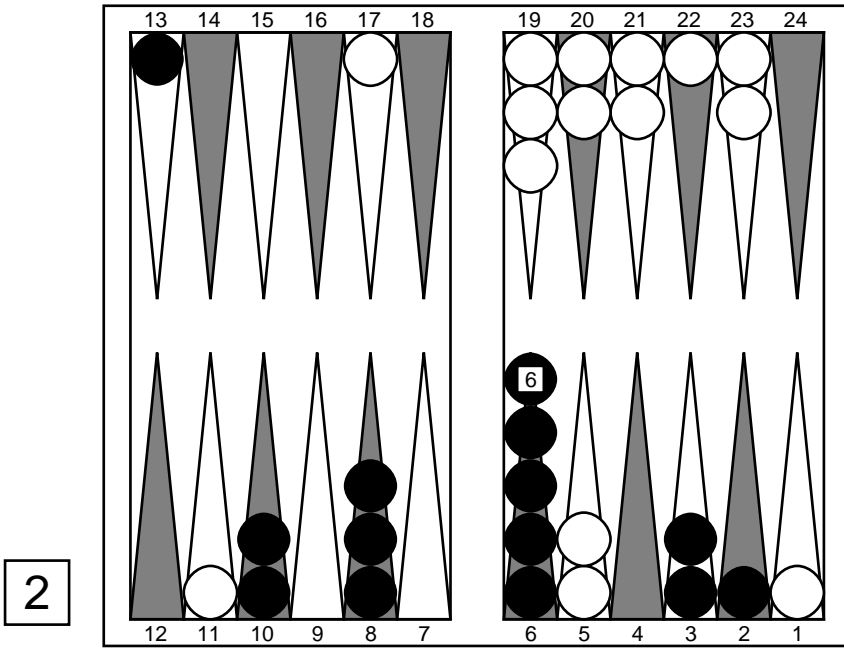
Position ID: 1nYCwDAaP2cEAA Match ID: EQE6AgAACAAA
 Pip counts: Leo Fernandez 139, Me 101

○ 46: 24/14

- * 1. Cubeful 2-ply 24/14 MWC: 42.69%
 0.392 0.083 0.001 - 0.608 0.108 0.004

Move number 8:

Me to play 61



Position ID: 1nYCgSEaP2cEAA Match ID: UQknAgAACAAA
 Pip counts: Leo Fernandez 129, Me 101

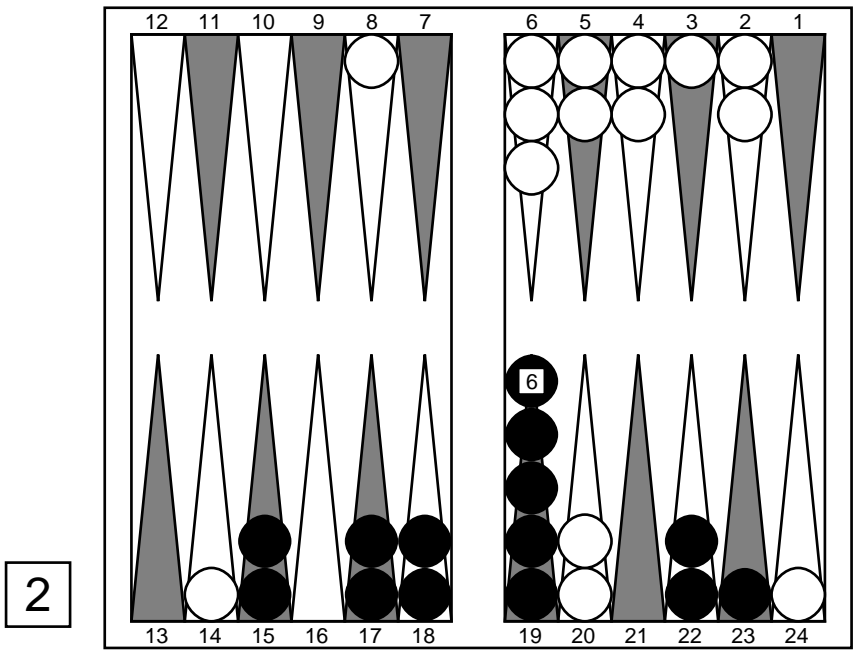
Cube analysis
 2-ply cubeless MWC 55.68% (Money: +0.242)
 0.608 0.108 0.004 - 0.392 0.083 0.001
 Cubeful equities:
 1. No double 57.11%
 2. Double, pass 61.51% (4.40%)
 3. Double, take 55.02% (-2.09%)
 Proper cube action: No redouble, take (32.2%)

● 61: 13/7 8/7

* 1. Cubeful 2-ply 13/7 8/7 MWC: 56.52%
 0.585 0.085 0.002 - 0.415 0.092 0.002

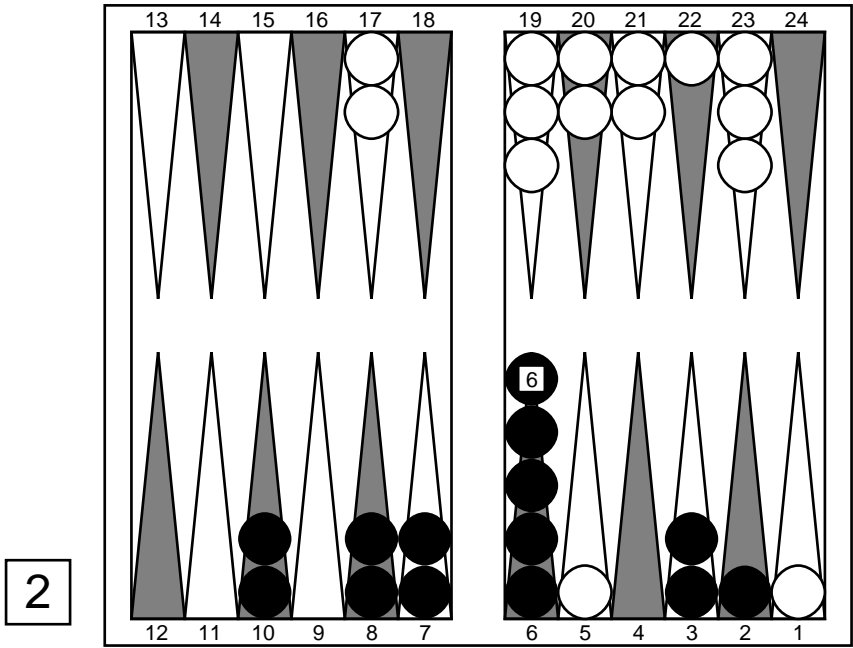
Move number 9:

Leo Fernandez to play 66



Position ID: 1nYCgSEav80AAA Match ID: EQE7AgAACAAA
 Pip counts: Leo Fernandez 129, Me 94
 ○ 66: 20/2 14/8?

- | | | | | | |
|----|---------------|---------------------------------------|-----------|------|-----------------|
| 1. | Cubeful 2-ply | 20/8(2) | | MWC: | 41.47% |
| | | 0.316 0.034 0.000 - 0.684 0.033 0.001 | | | |
| 2. | Cubeful 2-ply | 20/2 20/14 | | MWC: | 41.17% (-0.30%) |
| | | 0.309 0.034 0.000 - 0.691 0.045 0.001 | | | |
| * | 3. | Cubeful 2-ply | 20/2 14/8 | MWC: | 40.35% (-1.13%) |
| | | 0.296 0.047 0.001 - 0.704 0.130 0.004 | | | |



Position ID: ru0MACEav80AAA Match ID: UQkgAgAACAAA
 Pip counts: Leo Fernandez 105, Me 94

Cube analysis

4-ply cubeless MWC 57.70% (Money: +0.503)
 0.703 0.138 0.004 - 0.297 0.046 0.001
 Cubeful equities:
 1. Double, take 59.52%
 2. Double, pass 61.51% (1.98%)
 3. No double 59.27% (-0.25%)
 Proper cube action: Redouble, take

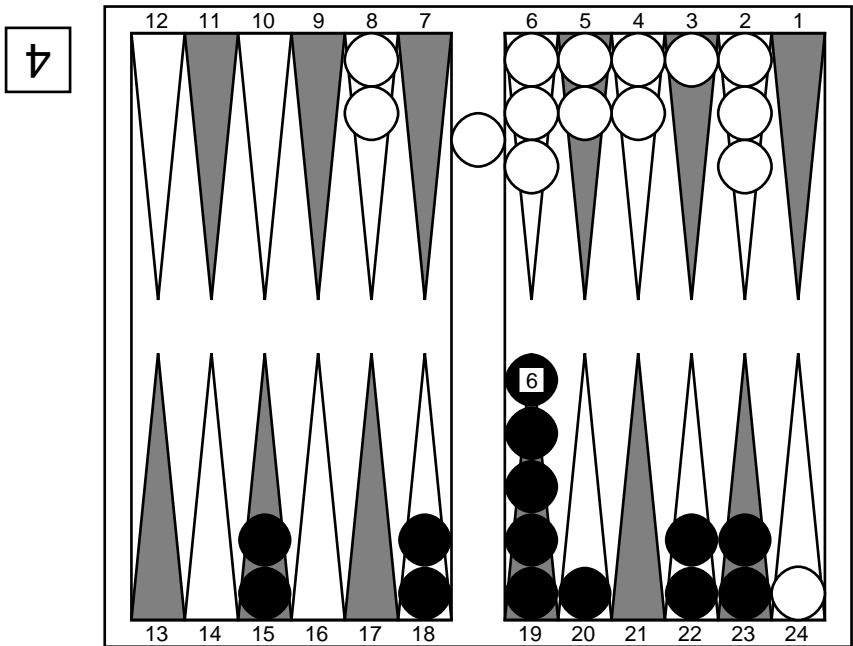
● Double

○ Take

● 36: 8/5* 8/2

* 1. Cubeful 2-ply 8/5* 8/2 MWC: 57.35%
 0.644 0.167 0.004 - 0.356 0.067 0.001

Move number 13: Leo Fernandez to play 23

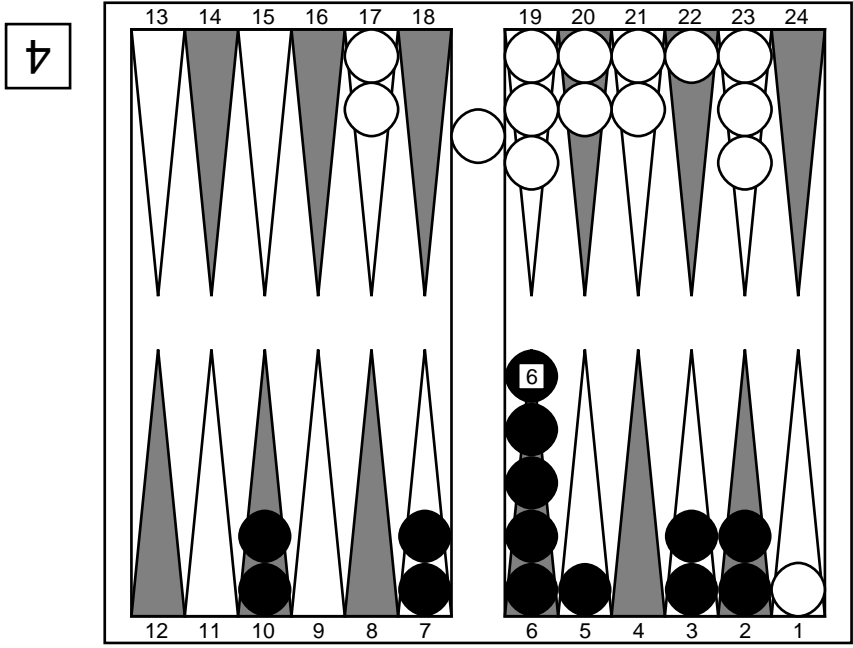


Position ID: ru0MAFA2/cYAAA Match ID: AgEtAgAACAAA
 Pip counts: Leo Fernandez 110, Me 85

Cube analysis
 2-ply cubeless MWC 40.29% (Money: -0.390)
 0.356 0.067 0.001 - 0.644 0.167 0.004
 Cubeful equities:
 1. No double 42.85%
 2. Double, pass 61.91% (19.05%)
 3. Double, take 32.50% (-10.36%)
 Proper cube action: No redouble, take (35.2%)

○ 23:

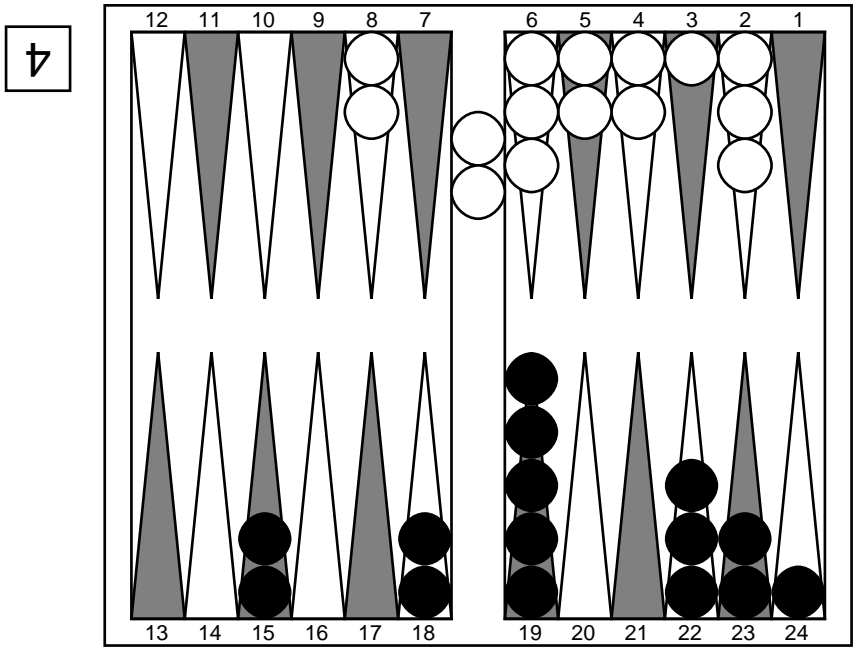
Move number 14: Me to play 34



Position ID: ru0MAFA2/cYAAA Match ID: QokxAgAACAAA
 Pip counts: Leo Fernandez 110, Me 85
 ● 34: 6/3 5/1*

* 1. Cubeful 2-ply 6/3 5/1* MWC: 62.42%
 0.742 0.233 0.004 - 0.258 0.047 0.001

Move number 15: Leo Fernandez to play 56



Position ID: ru0MAGDt+MYAAA Match ID: AoE6AgAACAAA
 Pip counts: Leo Fernandez 111, Me 78

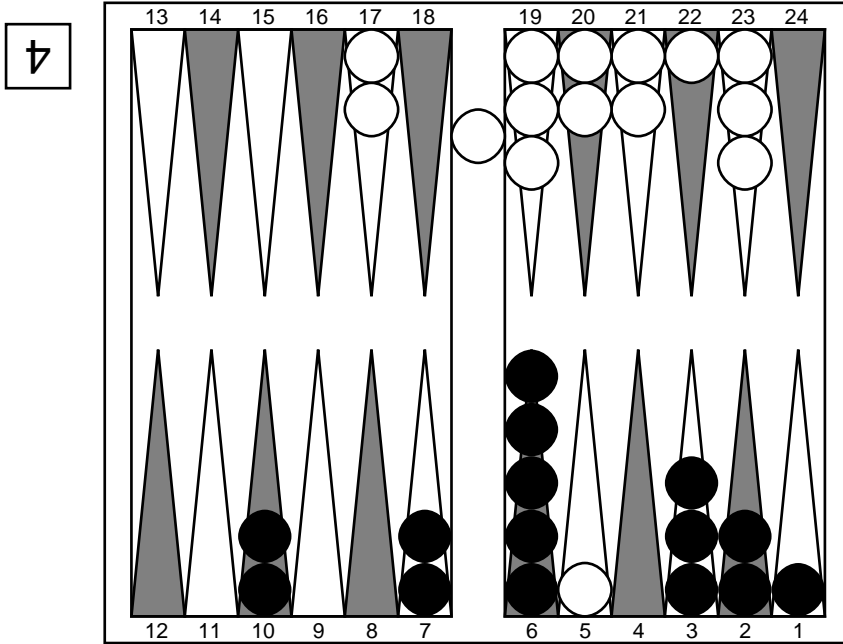
Cube analysis
 2-ply cubeless MWC 35.88% (Money: -0.673)

0.258 0.047 0.001 - 0.742 0.233 0.004
 Cubeful equities:
 1. No double 37.91%
 2. Double, pass 61.91% (24.00%)
 3. Double, take 25.21% (-12.70%)
 Proper cube action: No redouble, take (34.6%)

○ 56: bar/20

* 1. Cubeful 0-ply bar/20 MWC: 33.95%
 0.188 0.028 0.000 - 0.812 0.275 0.004

Move number 16: Me to play 51



Position ID: ru0MAEHT+MYAAA Match ID: QokmAgAACAAA
 Pip counts: Leo Fernandez 106, Me 78

● 51: 6/1 3/2?

1. Cubeful 2-ply 10/5* 6/5 MWC: 68.28%
 0.833 0.379 0.009 - 0.167 0.035 0.001
 2. Cubeful 2-ply 6/5* 6/1 MWC: 66.34% (-1.94%)
 0.790 0.365 0.005 - 0.210 0.037 0.001
 * 3. Cubeful 2-ply 6/1 3/2 MWC: 65.82% (-2.47%)
 0.843 0.161 0.001 - 0.157 0.010 0.000